



# MONTHLY MEMBERSHIP PROGRESS REPORT

District 317 F

Results as of: 5/31/2015

GMT: Mahesh Pasqual

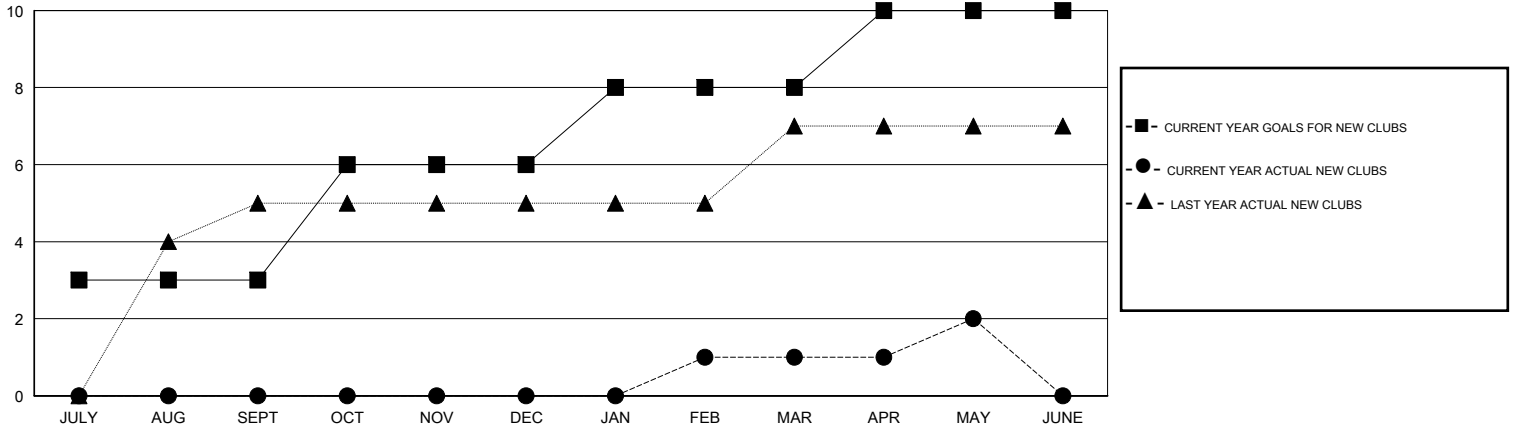
LOCATION INDIA

GMT CA 6

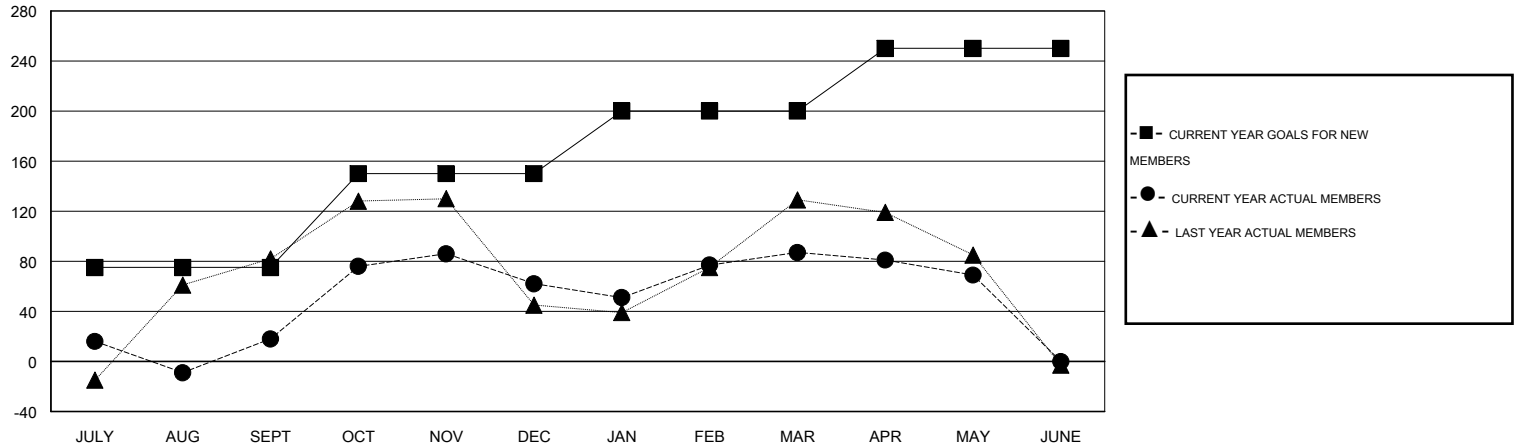
Clubs				
RESULTS FOR 2014-2015				
QUARTER	NEW CLUB GOAL	NEW CLUBS	DROPPED CLUBS	NET GAIN/LOSS
JULY/AUG/SEPT	3	0	1	-1
OCT/NOV/DEC	3	0	0	0
JAN/FEB/MAR	2	1	0	1
APR/MAY/JUNE	2	1	0	1

Members				
RESULTS FOR 2014-2015				
QUARTER	NEW MEMBER GOAL	CHARTER AND NEW MEMBERS ADDED	DROPPED MEMBERS	NET GAIN/LOSS
JULY/AUG/SEPT	75	73	55	18
OCT/NOV/DEC	75	92	48	44
JAN/FEB/MAR	50	46	21	25
APR/MAY/JUNE	50	37	55	-18

GOALS AND ACTUAL NEW CLUBS CUMULATIVE



GOALS AND ACTUAL MEMBERS CUMULATIVE



DROPPED CLUBS: 1
------------------

41 CLUBS OF 56 ADDED 1 OR MORE NEW MEMBERS

GENDER DISTRIBUTION	
MALE	1,269 (80.78%)
FEMALE	302 (19.22%)

DROPPED MEMBERS	
DECEASED	3
CLUB CANCELLED	28
OTHER	148
<b>TOTAL</b>	<b>179</b>

[CLICK HERE FOR HEALTH ASSESSMENT DATA](#)

FAMILY UNIT MEMBERS	401
HEAD OF HOUSEHOLD	181
NON-HEAD OF HOUSEHOLD	220